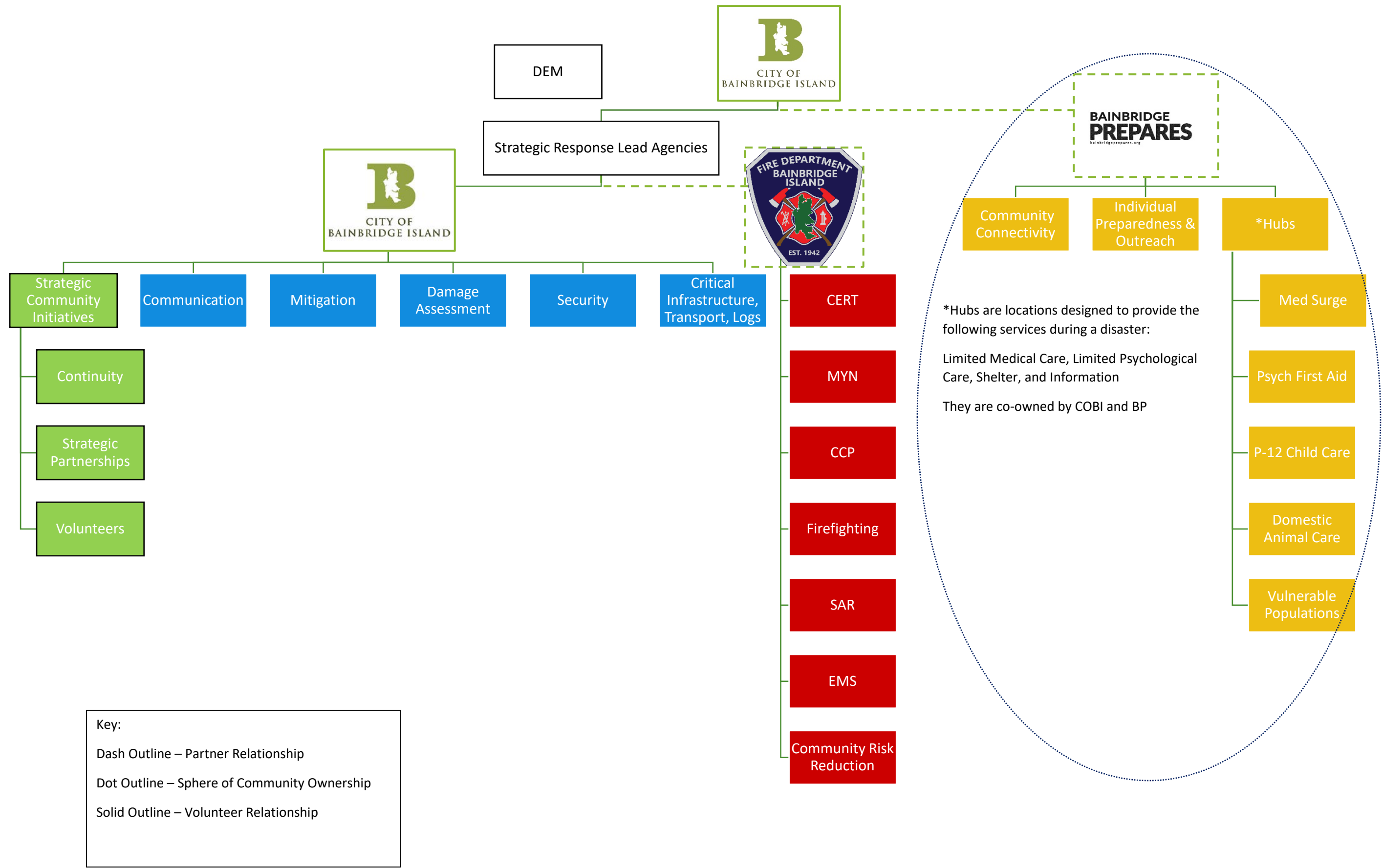


EMERGENCY MANAGEMENT STRATEGIC PLANNING ORG CHART



Lead for all COBI Committees – Amber Richards

- Strategic Community Initiatives – Tom McCloskey
 - Continuity: Rex Oliver, Jerri Lane
 - Strategic Partnerships: Terry Kirby
 - Volunteers: Jim Hopper
- Communications: Kellie Stickney, Ben Sias, Mark Bartholomew, Luke Carpenter (BIFD), Ham Rep
- Mitigation: Aaron Quitslund, Rob Grant,
- Damage Assessment: James Weaver, Luke Carpenter (BIFD)
- Security: Jeff Horn
- Critical Infrastructure/Transportation/Logistics: Chris Hammer (COBI), Tami Allen (COBI), Doug Slingerland (Parks), Gordon Falkner (PSE), Debra Lester (KPUD), Dave Lindquist (KPUD)

Lead for all BIFD Committees – AC Luke Carpenter

- CERT: Gregg Watts
- MYN: Janine Courtemanche
- CCP: BIFD Operations Division
- Firefighting: BIFD Operations Division
- SAR: BIFD Operations Division
- EMS: BIFD Operations Division

Lead BP Representative – Scott James

- Hubs: Jenni Brewster, Danie Chang
- IPT: Jan Kerry, Allen Elliott
- Med Surge: Roxanne Corff, Phil Fergusson, Rob Drury
- Psych First Aid: Anne Smith, Britt Gonsoulin
- Child Care: Kari Murphy, Susie Burdick
- Domestic Animal Care: Lisa Horn, Eric Stevens
- Vulnerable Populations: Rita Elsberry, Paul Stumme-Diers

Partners:

- American Red Cross
- Bainbridge Island Chamber of Commerce
- Bainbridge Island Downtown Association
- BIFD
- BIMPRD
- BISD
- Bainbridge Prepares
- Empact Northwest
- Puget Sound Energy
- Rotary Club of Bainbridge Island

Operational Annexes and Primary Local Agencies/Organizations:

1. Transportation & Logistics
 - a. COBI, Parks
2. Communications
 - a. COBI, BIFD, Parks, BISD, Amateur Radio
3. Critical Infrastructure
 - a. COBI, Parks, KPUD, PSE, Bainbridge Disposal
4. Firefighting
 - a. BIFD
5. Emergency Management
 - a. COBI, BIFD
6. Hub Operations (Shelter, Mass Care, Human Services, Animal Services)
 - a. BP, ARC,
7. Public Health and Medical Services
 - a. Kitsap County Public Health, Kitsap County Coroner, Virginia Mason, CHI Franciscan
8. Search & Rescue
 - a. BIFD
9. Oil & Hazardous Materials Response
 - a. COBI
10. Agriculture and Natural Resources
 - a. COBI, BP
11. Public Safety & Security
 - a. COBI
12. Long Term Community Recovery
 - a. COBI, BP
13. External Affairs
 - a. COBI, BIFD, Parks, BISD
- 20: Defense Support to Civil Authorities
 - a. COBI
- 21: Damage Assessment
 - a. COBI, BIFD, BISD, Parks
- 22: State and Federal Support
 - a. COBI